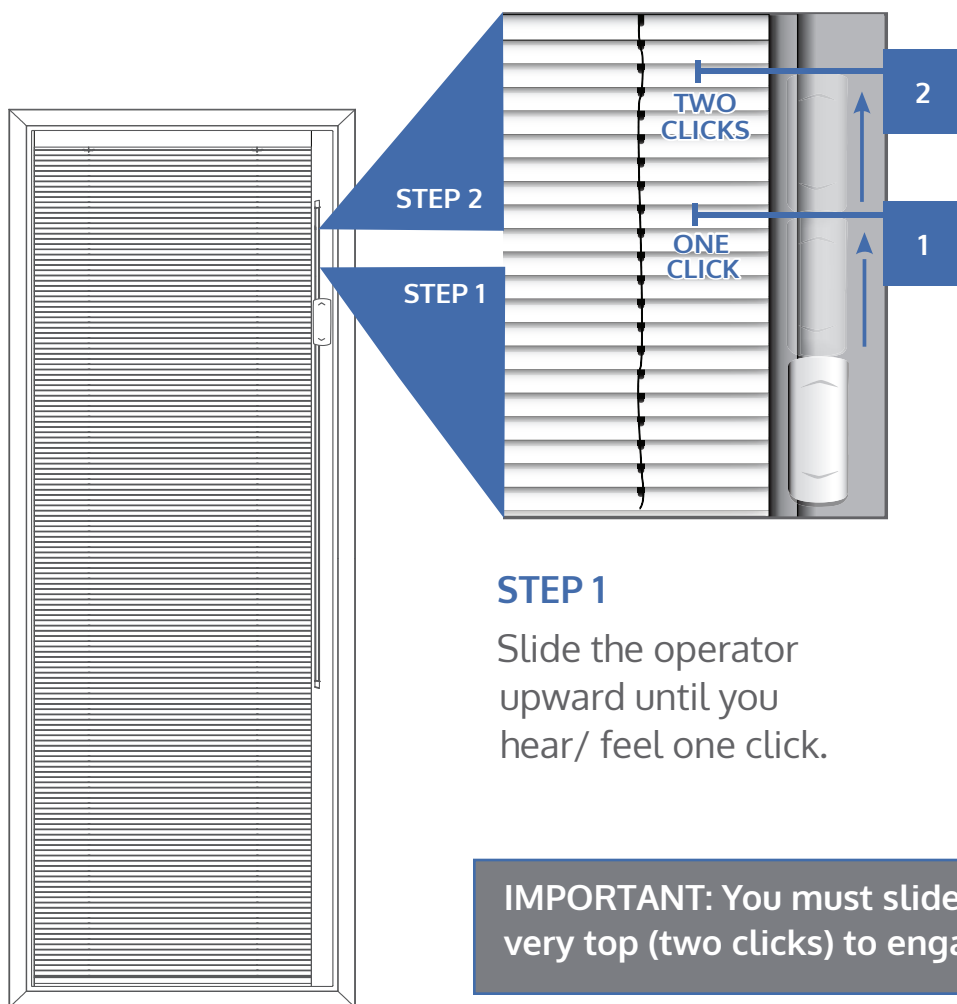


Visit [blinkblinds.com/doorglass](https://blinkblinds.com/doorglass) for video instructions.

Blink® Entry Doorglass blinds raise and lower through use of magnets. If the operator comes loose and you are unable to operate the blind, it means the operator magnets have become disengaged. This is easy to correct - just slide the operator all the way to the top of the unit to re-engage it (see diagram).



### STEP 1

Slide the operator upward until you hear/ feel one click.

### STEP 2

Continue sliding the operator up until you hear/feel a second click.

**IMPORTANT:** You must slide the operator to the very top (two clicks) to engage the magnets.